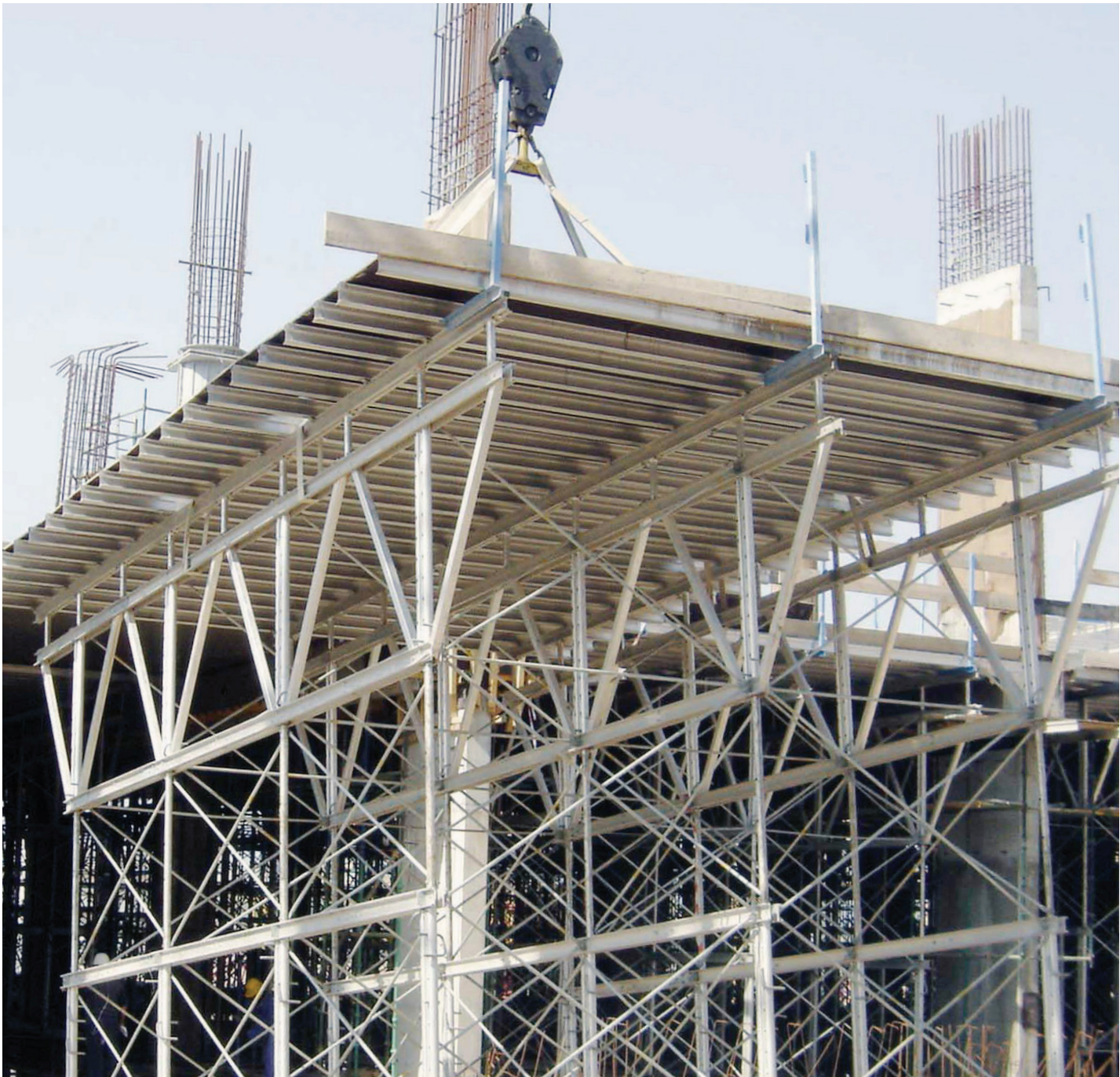


Alumalite Truss Table Form[®]

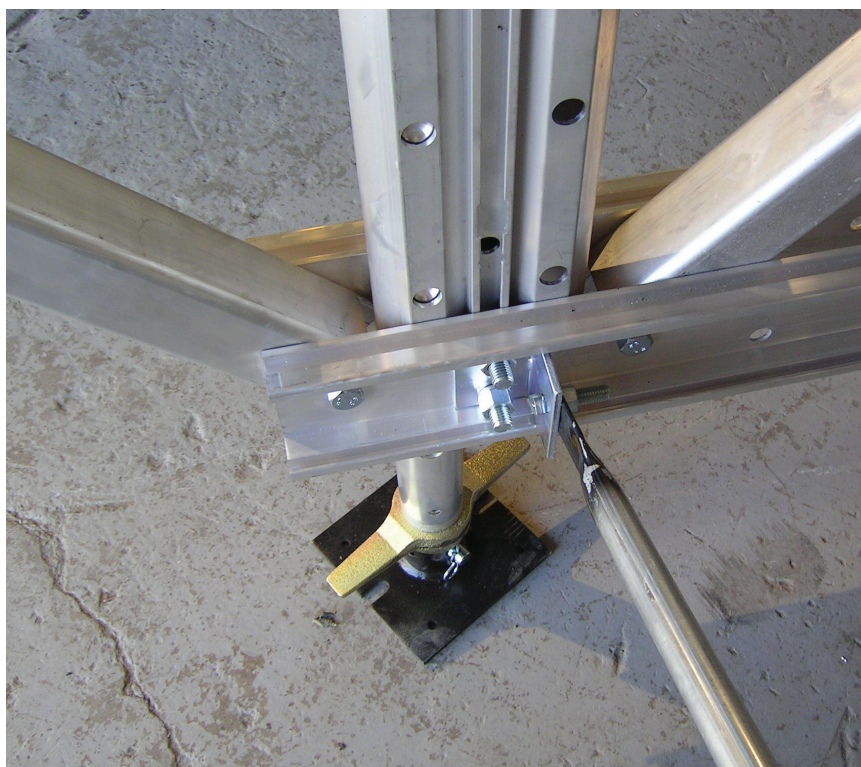
The Aluma Frame System[®] is the most versatile and efficient frame system in the market used in a variety of applications.



At Work For You

► Technical specifications Alupalite Truss Table Form

Product description	High-capacity aluminum frame shoring system
Application	Bridge decks Floor slabs Tunnels Deep floor Table forms Flying tables
Material	Aluminium 6061 – T6
Max allowable udl	W = 38.9kN/m
Std truss lengths	7.32m 4.88m 3.66m 2.44m 1.22m
Structural	Suitable for flat slabs and slabs with beams
Operating range	Both top and bottom extensions are available
Unit weight	Varies depending on structural requirements
Manipulation	Flown by crane or manoeuvred horizontally on the slab by using glides or rollers
Features	SWL up to 89 kN
Advantages	<ul style="list-style-type: none"> • Patented double-hollow extruded legs. • Outer leg and extension staffs • Beamside hinge forming • Attachments - swivel roller, single low glide, standard glide, truss lowering device, landing dolly, nylon sling



► The **Alupalite® Truss System** offers a variety of truss handling equipment making it easy to strip and maneuver the table for easy flying

Application & Use

- High capacity aluminum shoring system