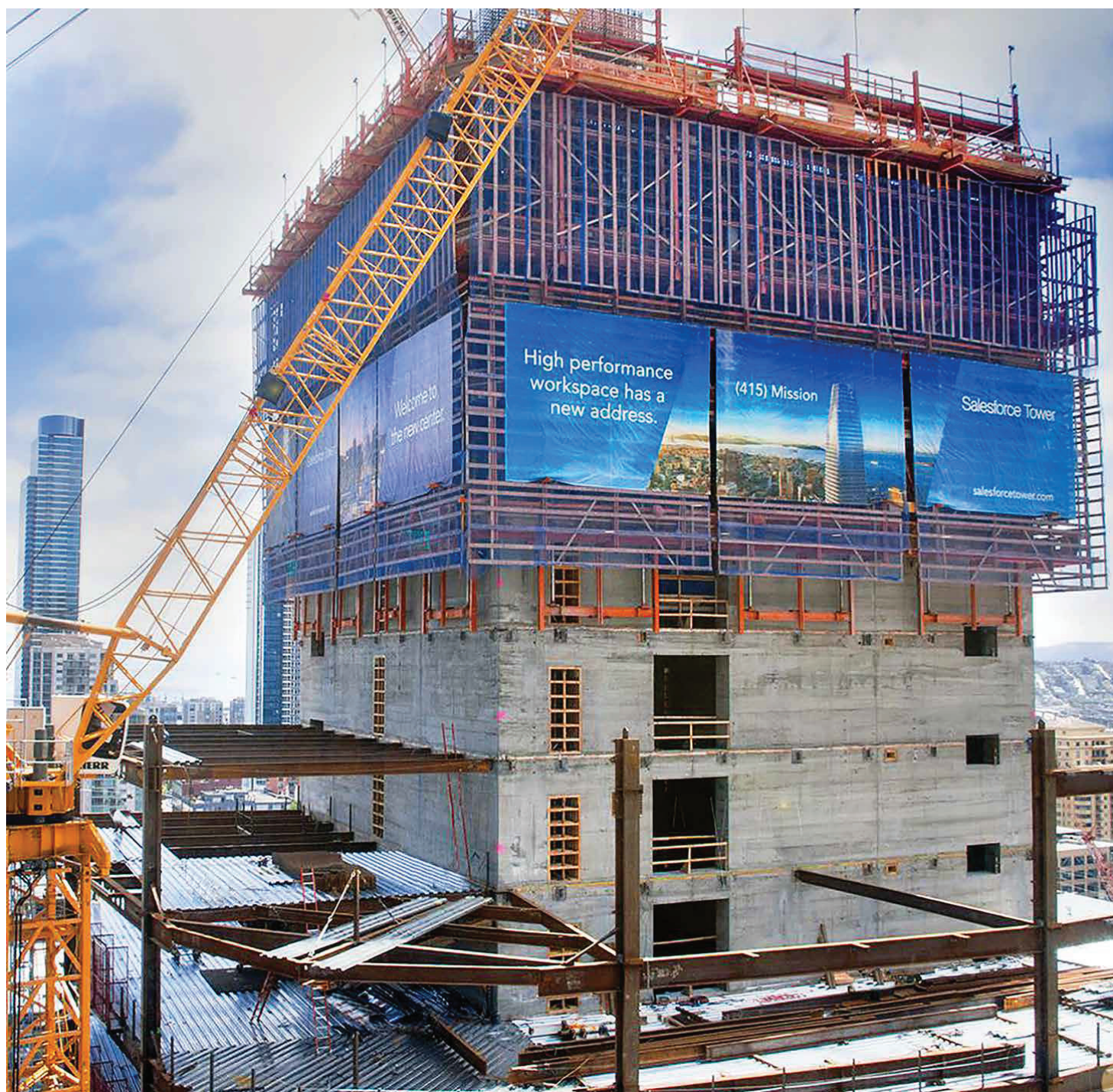


# TRU-LIFT®

## Self-Climbing Core formwork system



At Work For You



Designed to minimize construction cycle times and maximize safety, Tru-lift’s fully boarded top platform is designed to carry the concrete boom and any additional materials required

► **Features & Benefits**

**Safe**

Ability to have fully boarded working platforms create a safe working area. Concrete placement from top working platform via hatches in the upper deck, maximize safe working practices. External panels supported off overhead steel beams, easily retracts, providing safe access for panel cleaning & rebar placement.

**Easy**

Hydraulic stripping corners allow the quick and easy stripping and re-setting of interior wall formwork.

**Versatile**

All sizes of core walls can be accommodated, maximizing the versatility of the system.

**Effective**

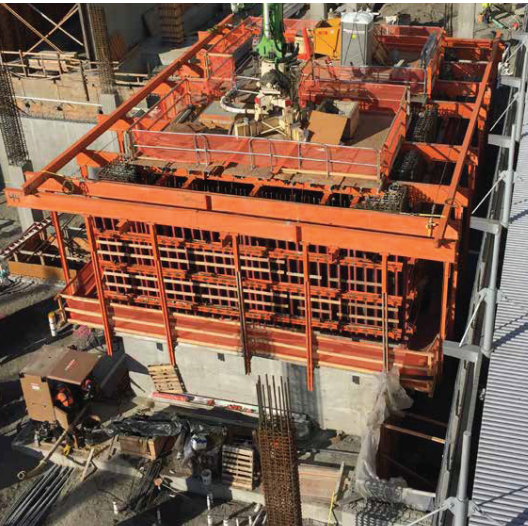
Complete system raised during the lifting cycle, maximizing system effectiveness. Up to 50 T hydraulic cylinder, climb system with a simple push of a button in as little as 20 min

**Reusable**

Reusable tapered tie system eliminating the use of sacrificial hardware, minimizing hardware costs.

**Efficient**

Minimal number of components ensures quick & easy erection, maximizing construction cycle times. Trailing platforms allow remedial work to previous pours, maximizing efficiency. Controlled lifting of equipment through use of hydraulics, eliminating crane time and maximizing safety.



► Complete system raised during the lifting cycle, maximizing system effectiveness.



► The New Generation hydraulic stripping corner\* is the quickest cleanest way to strip all 4 inside corners of a core form at once.

► **Safety Features**

Product description	Tru-Lift Self Climbing Core Formwork System
1. Handrails	Full perimeter handrails to upper and lower platforms as well as internal hanging platforms for areas not fully covered
2. Perimeter Screen	Optional use of reinforced PVC sheeting.
3. Enclosed Ladders	Full ladder access between platforms ensuring accessibility at all times during the various cycles
4. Inbuilt Stair Access Option	Optional using a modular stair access tower system supported off the internal platform allowing accessible egress/ingress from desired floor level below the self climbing system
5. Working Platforms	SGB using Plywood as decking

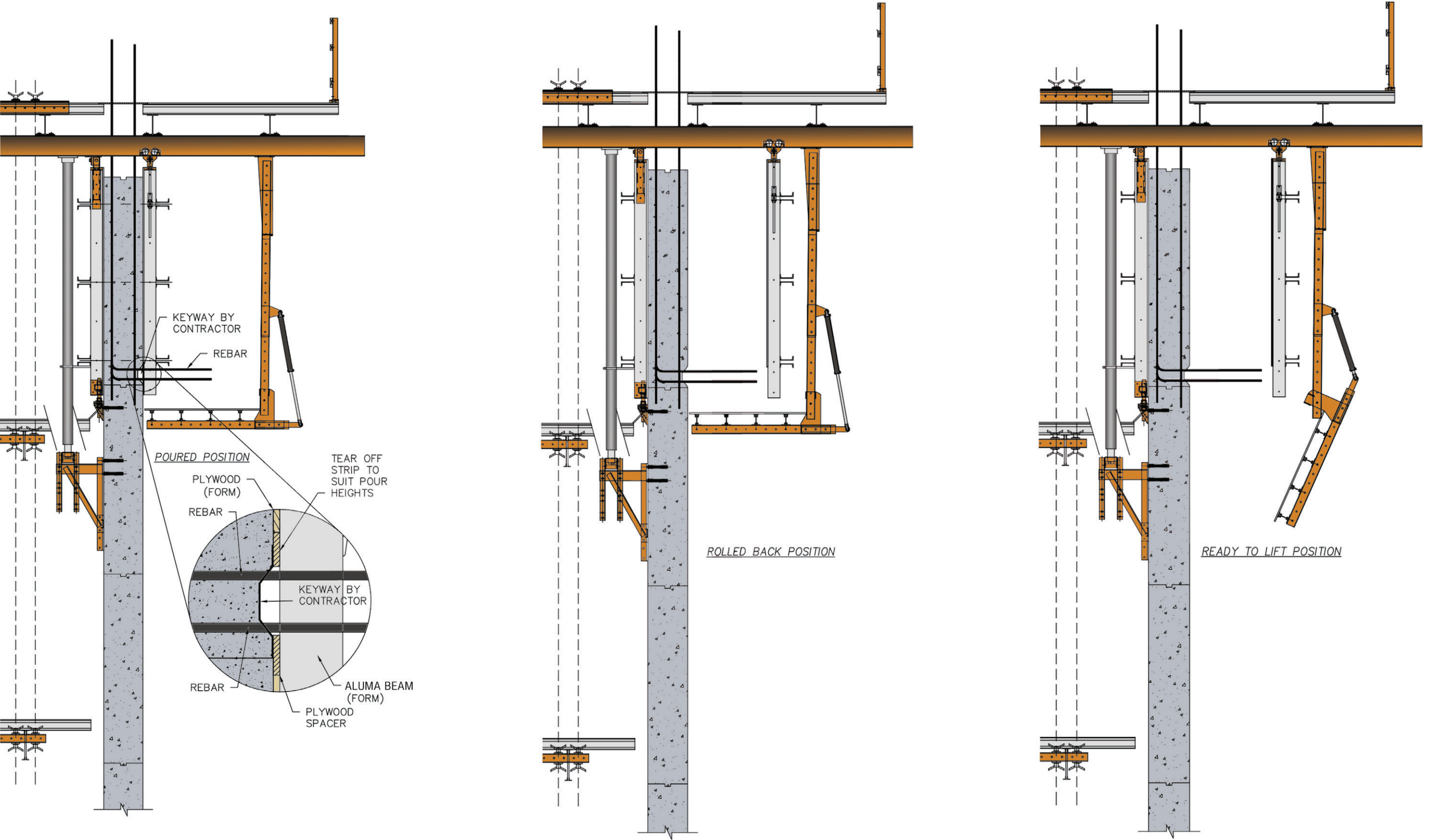




New Features

TRU-LIFT® | Dowel Bar Splicers Elimination Systems (Patent #9,611,663)

SGB's New Generation Dowel Bar Splicer Elimination System allows the contractor to utilize the Tru-Lift Self-Climbing Core Formwork System while pouring the elevator core walls ahead of the slabs. This system eliminates expensive dowel bar splicers that are normally required when utilizing this construction method. The dowel bars are allowed to protrude through the outside forms. Once the forms are rolled back off the rebar, the outside scaffolding is retracted clear of the rebar and the system lifted. This method speeds core construction without any delays waiting for the decks to keep up.





## New Features

TRU-LIFT® | Dowel Bar Splicers Elimination Systems (Patent #9,611,663)

**SGB's New Generation hydraulic stripping corner\*** is the **quickest cleanest way to strip all 4 inside corners of a core form at once.**

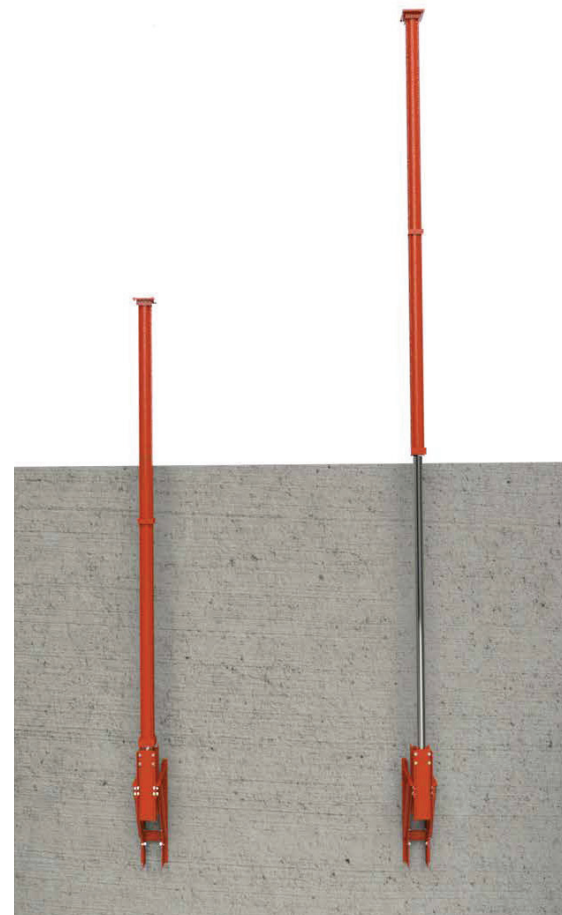
### Advantages

Assisted by hydraulic cylinders in each corner, all four corners can be stripped or reset in 10 seconds. The design of the corner is sealed so there's no chance of grout leakage from even self-consolidating concrete that would fowl up the corner operation or detract from the appearance of the finished concrete. The advantage of the hydraulic stripping corner\* is that it eliminates the cost of labor climbing the forms to manually release or set the corners.



### High Capacity Hydraulic Cylinders

Forming Concepts' New Generation High capacity 50 T hydraulic cylinders allow fewer hydraulic cylinders to be used. The larger capacity cylinders allow for greater grid beam spacing resulting in fewer grid beams crossing the walls. Therefore rebar can be caged and assembled in larger units speeding the cycle time. The lower cylinder attachment is adjustable and allows for greater flexibility of insert placement.



### Latest Design Hydraulic Pumps

Forming Concepts' New Generation hydraulic pumps are separate from the hydraulic reservoirs. This feature makes changing of pumps easier should the need arise. No oil has to be transferred, only the pump and motor.

Each hydraulic cylinder is energized by its own pump & reservoir, built into the forms.





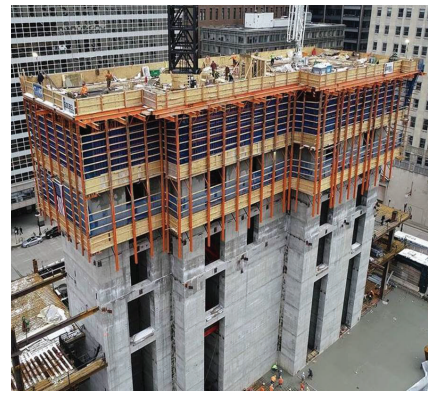
# ▶ Reference Projects



▶ **PIXEL Towers**  
Abu Dhabi - UAE



▶ **Salesforce Tower**  
San Francisco - USA



▶ **Commercial Hi-Rise (110 Wacker)**  
Chicago - USA



▶ **La Vie Tower**  
Dubai - UAE



▶ **Ballpark Village**  
San Diego - USA



▶ **Veolia Sludge Treatment Facilities**  
Hong Kong

**UAE**  
Phone: +971 (0)4 8132000  
Email: [my@brandsafway.com](mailto:my@brandsafway.com)

**Egypt**  
Phone: +202 2359 1568  
Email: [egy@brandsafway.com](mailto:egy@brandsafway.com)

**Saudi Arabia**  
Phone: +966 12 691 7690  
Email: [sa@brandsafway.com](mailto:sa@brandsafway.com)

**Singapore**  
Phone: +65 68 626122  
Email: [sg@brandsafway.com](mailto:sg@brandsafway.com)

**Malaysia**  
Phone: +60 3 42965455  
Email: [my@brandsafway.com](mailto:my@brandsafway.com)